

# AdvancedTCA<sup>®</sup> CO14G4

## 14U, 14-Slot, DC Input, ATCA Shelf

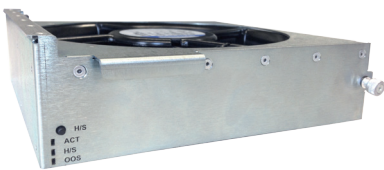


## Features

- **450W** or **600W** per slot Cooling Options
- Ultra high performance **Air-/Plane<sup>®</sup>** backplane supporting 40Gbps and now **100Gbps** !
- Dual Star, Dual-Dual Star, Full Mesh topologies
- 19", 14U Rackmount chassis
- Accommodates 14, ATCA boards and RTMs
- Redundant Pigeon Point Based Shelf Manager
- 4 redundant Power Entry Modules (A1+ A2 and B1 + B2) to accommodate up to 800W per slot
- Pull cooling with 4 hot-swappable redundant fan trays with excellent airflow distribution
- High Reliability Bussed or Radial IPMB
- EMI containment for front and rears card cage

# AdvancedTCA<sup>®</sup> CO14G4

## Field Replaceable Units (FRU)



## Features

### Fan Tray

- High pressure Air Mover with finger protection
- Very high reliability
- Integral control board
  - Supports Hot Swap ability
  - Fan speed 20% to 100% duty cycle
  - Service status indicators (LED's) and Hot Swap button on front panel
- Very quiet to satisfy NEBS acoustic noise requirement at normal operating conditions

### PEM

- Current rating of max 170A per PEM (overall 340A per channel A and 340A per channel B)
- -40VDC to -72VDC (wide range input)
- 2 input feeds per PEM for ease of installation
- 8 fused/filtered backplane feeds from each PEM
- Fuse monitoring sensors and LED indication at the front panel

### Shelf Management Controller

- Carrier board based on Pigeon Point Systems Shmm700 module
- Front panel interfaces:
  - RS-232
  - Ethernet (eth0 via Ethernet switch)
  - Telco Alarms contacts
- Front panel indication:
  - Fan tray OOS LED (per each fan tray)
  - SHMM700 status LEDs
  - Telco Alarms LEDs
- IPMB configuration:
  - Dual Redundant Bussed IPMB (standard)
  - Redundant Dual Star "true" Radial IPMB (optional)
- Remote upgrade capability
- RMCP, SSH, SNMP, and HPI interface