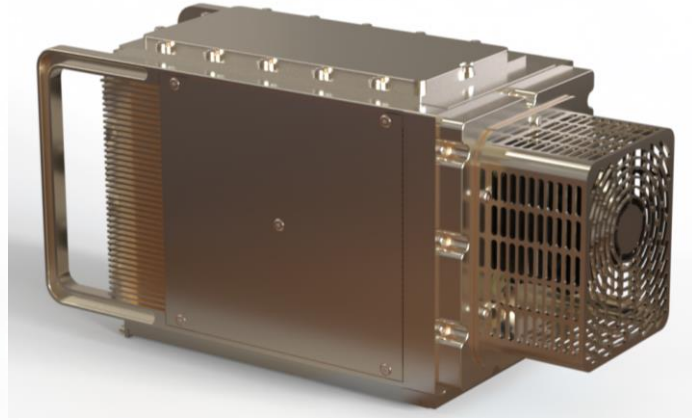
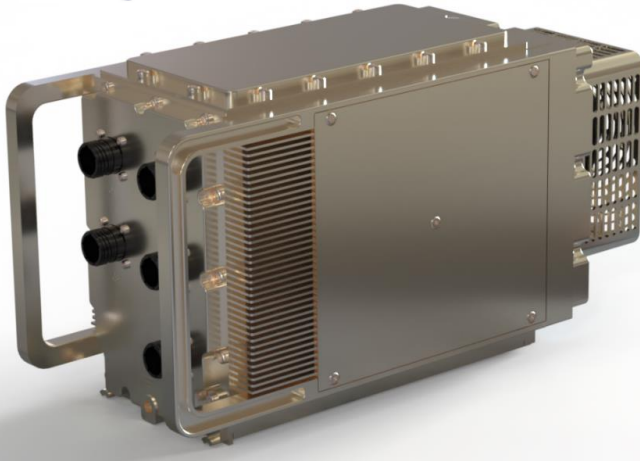


## VPX 3U ½ ATR Chassis with **Air-/Plane®** Backplane

VPX™



SOSA™  
Sensor Open Systems Architecture

### Introducing Comtel's 3U ATR Sub-System

Our 3U ½ ATR Sub-System offers the System Integrator a fully compliant Chassis complete with an I/O and Backplane. The Chassis provides the appropriate cooling requirements for Payload Cards at extreme environmental conditions. This allows the System Integrator to focus on their core expertise. The Sub-System is designed to be utilized in numerous applications within military, aerospace and harsh environments.

- 6-Slot 3U VPX Sub-System.
- 0.85" Pitch
- ARINC 404A ½ ATR with Blind-Mate Guide Pins and J-Hook Hold-Down Screws
- ½ ATR Tray optional.
- Customisable Front Panel I/O
- Backplane with Comtel's high-speed **Air-/Plane®** technology for 25Gbps per differential pair is available..
- SOSA Aligned
- Integral high performance Fan System
- Short Lead-Time

## Product Features

### Card Slots

- Slot count: 6; (5 x Payload + 1x PSU)
- Pitch: 0.85"
- VITA 48 Compliant
- Other slot counts/pitches are available upon request

### Power

- Total power: 400Watt 71°C at Sea Level or 20°C at 50,000ft (15000m)
- Power input 28VDC
- Input Filtering in shielded area

### Backplane

- Custom on request
  - High Speed **Air-/Plane®** technology for 25Gps per differential Pair
  - SOSA compliant
  - VITA 62 PSU slot
  - VITA 66 & 67 available
  - SOSA aligned

### Chassis

- ARINC 404A ½ ATR with extended Fins
- Can also be baseplate mounted
- Dimensions
  - 390mm deep (inc. Handle)
  - 210mm High
  - 164mm wide
  - Weight: 7.5Kg (exc Payload Boards)

### Cooling

- Forced air cooling, rear exhaust
- Controlled with Chassis Manager

### Front Panel

- Customisable
- Fibre Optic Cable management

### Heating

- Option for continuous operation at -70°
- Option for cold start at -48°C
- Controlled with Chassis Manager

Designed to meet Environment		
PARAMETER	SEVERITY	ENVIRONMENTAL
Temperature	-40 to +71°C	Upper: MIL-STD-810F Meth 501.4 Proc I & II Lower: MIL-STD-810G Meth 502.4 Proc I & II
Blowing Rain		MIL-STD-810G Meth 506.6 Proc I
Salt fog		MIL-STD-810G Meth 509.6
Vibration		Operational: MIL-STD-810F Meth 514.5
Shock	6 g 11 ms	Mechanical Shock: MIL-STD-810G Meth 516.7 Proc II & IV
Sand and dust		MIL-STD-810G Meth 510.6 Proc I & II
Icing/Freezing Rain		MIL-STD-810G Meth 521.3
Splash		IP65 IEC 60529 / MIL-STD-108
EMC	CE101, CE102, RE101, RE102	MIL-STD-461F

## Customization

This datasheet describes a base configuration for this system.  
The Backplane is specific to customer requirements.  
The Front Panel I/O is also specific to customer requirements.

## Compliance

- ANSI/VITA 46.0      VPX Baseline
- ANSI/VITA 48.2      VPX REDI Conduction Cooling
- ANSI/VITA 66.0      VPX Optical Interconnect
- ANSI/VITA 67.0      VPX Coaxial Interconnect
- ANSI/VITA 65        OpenVPX System Standard

Other compliances on request

## Order Information

Consult Comtel Sales

Headquarters:

[Sales@comtel-online.com](mailto:Sales@comtel-online.com)

United Kingdom:

[m.rumbles@comtel-online.com](mailto:m.rumbles@comtel-online.com)

Israel:

[sales@comtel.co.il](mailto:sales@comtel.co.il)

USA:

[nasales@comtel-online.com](mailto:nasales@comtel-online.com)

## Options

Continuous operation at -70°C at Sea Level

Cold start at -48°C

Input Filtering

Removable SSD on Top Panel

ATR Tray